



PRELIMINARY

DL8600

Palm Key-Based DOS Terminal

FEATURES

- **MOBILE @work**™
- WLAN 802.11b or OpenAir radio options
- *RadioReady* concept
- High autonomy NI-MH and Li-ION battery pack
- Advanced connectivity management
- Robustness and Ergonomics
- Multiple scanning engine
- Battery Hot Swapping

APPLICATIONS

- Warehousing management
- Shop Floor
- Retail
- Transportation

GENERAL DESCRIPTION

Datalogic is proud to announce a new terminal of the rugged *mobile@work*™ product line: the **DL8600**.

The first key-based palm terminal in Datalogic's line of products for industrial environments, the **DL8600** is a light-weight hand-held terminal with advanced bar code scanning, data processing and communications features. It has been conceived to provide the highest productivity and comfort in demanding environments, to link the users to data and to each other in transportation and logistics applications such as warehouses, docks, yards, and even on the road.

The **DL8600** represents a light-weight solution powered by a innovative PC-like architecture, the same of Viper™, with the *RadioReady* support.

Ease of use and reliability are benefits that are valued across all markets. The **DL8600** features a bright, easy-to-read 1/8 VGA display and rechargeable, long-lasting lithium-ion or nickel-metal-hydrate batteries, which contribute to the **DL8600**'s universal market appeal. Sealed to IP54 standards, the rugged durability of the **DL8600** meets the needs of many industrial environments.

Built to be a open system, the **DL8600** is supporting the most wide spread mobile standards, such as IEEE 802.11b and OpenAir, depending on the PC card used, it makes communication management extremely straightforward in both new and existing installations.

Communication management to the legacy system takes advantage of the new software product line that includes terminal emulation connectivity for OS/400, Unix, Microsoft Windows platforms, including the most used ERPs, such as SAP R/3. The **DL8600** fills the gap between office automation oriented and pure industrial mobile data collection solutions.



DATA TRANSMISSION / COMMUNICATION

The *mobile@work*[™] systems allow many type of reliable communications. On the terminal is located a sophisticated industrial connector that provides an immediate and sturdy communication interface through the serial EIA RS232 standard. The same connector allows also to recharge the batteries in fast-charge mode.

When a wireless serial link is needed, the integrated IrDA interface can be conveniently used; Datalogic supplies a universal driver compliant with the most wide spread mobile printers, so that barcode labels and notes can be easily printed by the user in field.



The most advanced features of the *mobile@work*[™] product line are suited to support the wireless communication through a WLAN (Wireless Local Area Network). With the *RadioReady* concept the most diffused WLAN PC-cards can be successfully used.

Datalogic can provide both IEEE 802.11b and OpenAir WLAN equipments, such as PC-card, included in the terminal and the Access Point, that provides the bridging between the wired and the wireless devices. The Access Point can be configured and managed through the wired or wireless network, by serial connection or modem, with the use of Telnet Access software, web browser or SNMP (Simple Network Management Protocol).

USER INTERFACE

All the components of the user interface have been designed with the aim to provide the highest ease of use, beginning with the wide high contrast LCD display (160 x 240 pixels) capable of visualising any operation in all ambient light conditions. Designers can use the display format that best suits their particular application needs, using the several font formats available. The full alphanumeric keypad is optimised in terms of space, colour scheme and ease of operation to accommodate the integration of a graphic overlay.

An innovative feature of the *mobile@work* product line is the battery hot swapping. The battery can be easily substituted without loosing data and time, so that the user productivity is optimized to a downtime close to zero.

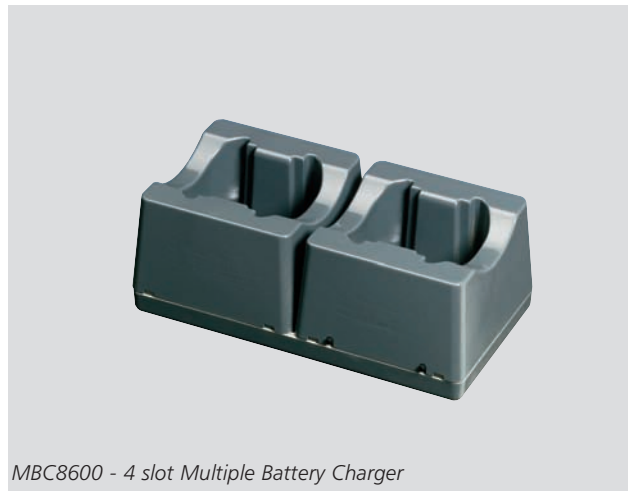
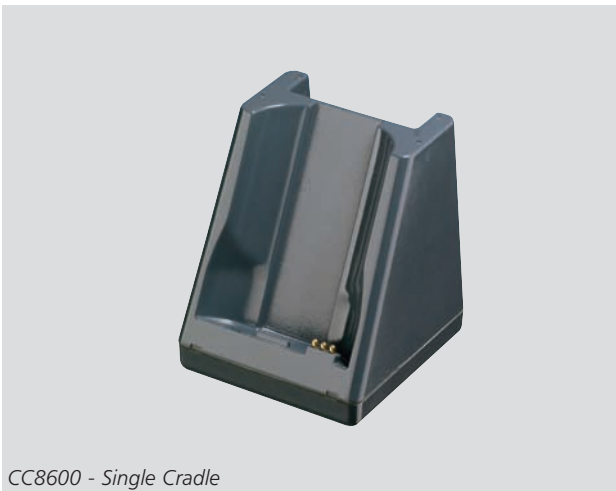


ACCESSORIES

The CC8600 Single Cradle, specifically developed to support batch applications, provides charging power to the **DL8600** and a spare battery pack. It supports direct serial connection through RS232 standard and Multidrop connection through a RS485 double-interface.

The MBC8600 Multiple Battery Charger is the ideal accessory for 24-hour applications or wireless applications. It is able to quickly charge and re-condition 4 battery packs simultaneously.

The new power supply FPS18 (14 VDC 4A) has been added to perfectly meet the *mobile@work*[™] product line requirements. It is the ideal solution for all the **DL8600** applications either with direct connections through CAB-4001 or with the CC8600 and MBC8600. The FPS18 is a full range power supply, from 90 to 250 VAC with a standard plug for PC/monitor cable.



CONNECTIVITY TOOLS

Performance of the DL8600 can be increased with the assistance of TN Client, a complete software package for terminal emulation based on a standard Telnet-TCP/IP protocol. TN Client brings together the VT-100, VT-220, HP700/92, IBM 5250 and 3270 emulations, allowing for real time interaction between the Mobile unit and Unix, HP, IBM AS/400 and IBM Mainframe systems.



To address the windows environment Datalogic has started an important development with the aim to provide a set of software tools, mainly addressed to the system integrator and visual programmer, that help in getting the mobile terminals connected to the host system through without the need to program the mobile unit locally.

DL TN-Link™

The DL TN-Link is based on the Active_X architecture; it includes two basic components, the **Client-Pro™** that is used to design the users screen and the **run-time OCX**, that can be added to the RAD language programming suite.

This approach allows the programmer to manage the mobile unit from the main application, through a set of standard commands.

On each screen created by the **Client-Pro™** utility, the data entry can be completely customised, enabling the laser input only when is needed.

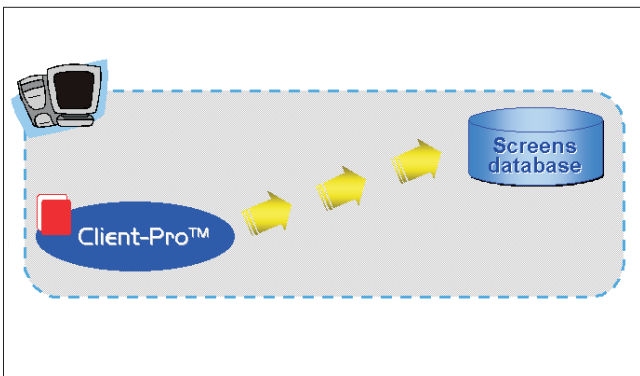
On Datalogic DOS-based terminals (DL8600, Viper™ but also Formula DOS terminals) it is only required to install terminal emulation software VT100.

DL Web-Link™

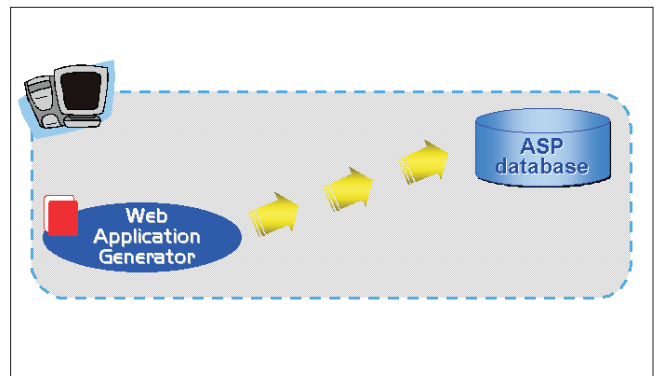
The DL WEB-Link is based on web technology and takes advantage of the embedded capability of Internet Protocol, managing the communication between the database and the mobile unit through a standard IIS (Internet Information Server).

The DL WEB-Link solution is composed of two elements: the **Web Application Generator** and the **Web Client** for DOS terminals. The first one is used to build up the application by creating a set of pages ASP (Active Server Page) that directly interacts with the database located in the host side, using a standard XML/HTML approach.

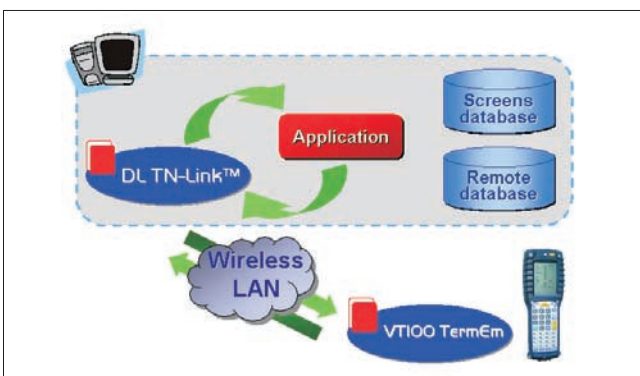
The second one is nothing else than a web browser, character based, specifically developed for the Datalogic DOS terminals (DL8600, Viper™ but also Formula DOS terminals).



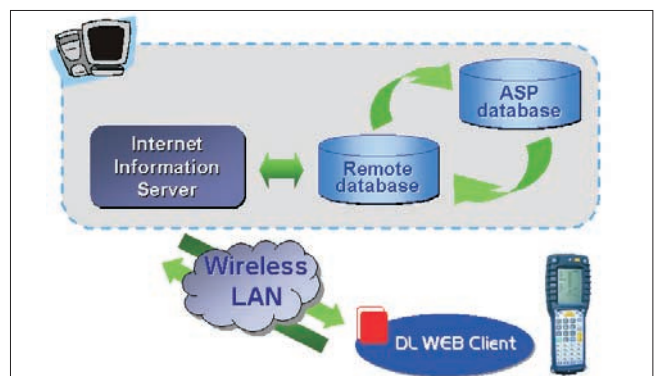
DL TN-Link™ Design time



DL WEB-Link™ Design time



DL TN-Link™ Run time



DL WEB-Link™ Run time

SPECIFICATIONS

PHYSICAL CHARACTERISTICS

DIMENSIONS	227 mm H x 83 mm W x 60 mm D
WEIGHT	480 gm with battery and WLAN PC-card
LASER SOURCE	Visible Laser Diode, 650 nm
OPERATING TEMPERATURE	-10° to 50°C
STORAGE TEMPERATURE	-20° to 70°C
DROP	Multiple 1.5 m drops to concrete
ENVIRONMENTAL SEALING	IP54
DISPLAY	Graphic high-contrast LCD with 160 x 240 pixel resolution and backlight feature; keyboard controlled contrast
SCREEN FORMAT	20 char. x 20 lines with default font
POWER	Removable battery pack with rechargeable NiMH or Li-ION batteries; Supercapacitor to back-up system RAM during battery pack change; Lithium batteries to preserve set-up and data; Local connection for fast battery charging and serial communication
CONTROL SWITCHES	Power ON/OFF, contrast, backlight, alphanumeric toggle
KEY PADS	42-key full alphanumeric silicon rubber keypad
STATUS INDICATOR LIGHTS	Good decode, battery level, alphanumeric selection

PERFORMANCE

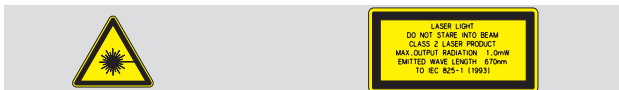
MICROPROCESSOR	32-bit Amd486 CPU, up to 32 MHz
OPERATING SYSTEM	Datalogic ROM-DOS 6.22, Datalogic proprietary BIOS
SYSTEM RAM MEMORY	2 or 8MB
SYSTEM FLASH MEMORY	2 or 8MB
REAL-TIME CLOCK	Time and date stamping under software control; year 2000 compliant
INTERFACES	IrDA: bi-directional communication port with mobile printers compatibility Electrical: integrated 7-pin RS232 with data rate up to 115.2 Kbps, including fast in-line battery charger

RF DATA COMMUNICATIONS

NETWORK	WLAN, 802.11b or OpenAir compliant
ANTENNA	Internal with diversity option
FREQUENCY RANGE	Country dependent, typically 2.4 to 2.5 GHz

PERIPHERALS

SCAN ENGINES	Linear: High Performance or Long Range; 2D: Raster for PDF417 and stacked codes
CRADLES	Single desk cradle with additional slot for spare battery; bi-directional data communication supported through IrDA interface
BATTERY CHARGER	4-slot multiple battery charger



Product and company names and logos referenced may be either trademarks or registered trademarks of their respective companies.

We reserve the right to make modifications and improvements

Datalogic S.p.A.
Italy
Corporate Headquarters
Tel. +39 051/3147011
Fax +39 051/726562
info@datalogic.it

Sales Italy
Tel. +39 051/3147300
Fax +39 051/726562
venditeitalia@datalogic.it

Sales International
(Central and South America,
Far East, Middle East - Africa)
Tel. +39 041/5986511
Fax +39 041/5986550
sales-intl@datalogic.it

Australia
Datalogic PTY LTD.
Tel. +61 3/95589299
Fax +61 3/95589233
sales@datalogic.com.au

Germany
Datalogic GmbH
Tel. +49 7026/6080
Fax +49 7026/5746
info@datalogic.de

Sweden
Datalogic AB
Tel. +46 40/385000
Fax +46 40/385001
info@datalogic.se

Austria
Datalogic Handelsges. mbH
Tel. +43 2236/258820
Fax +43 2236/258825
office@datalogic.co.at

Japan
Izumi Datalogic Co., Ltd.
Tel. +81 78/3033400
Fax +81 78/3033402
idlmarke@izumi-datalogic.co.jp

United Kingdom
Datalogic UK Ltd.
Tel. +44 1582/464900
Fax +44 1582/464999
enquiries@datalogic.demon.co.uk

Denmark
Datalogic AB
Tel. +45 44/209970
Fax +45 44/209972
info@datalogic.se

Netherlands
Datalogic Optic Electronics BV
Tel. +31 346/572888
Fax +31 346/568736
info@datalogic.nl

U.S.A.
Datalogic Inc.
Tel. +1 859/6897000
Fax +1 859/3344970
info@datalogic.com

France
Datalogic France S.A.
Tel. +33 1/60921111
Fax +33 1/60921340
info@datalogic.fr

Spain
Datalogic Iberia
Tel. +34 91/3837755
Fax +34 91/3837962
dliberia@datalogic.it

Datalogic Quality Partner



PRELIMINARY

Datalogic Communication Division
Printed in Italy March 2002

